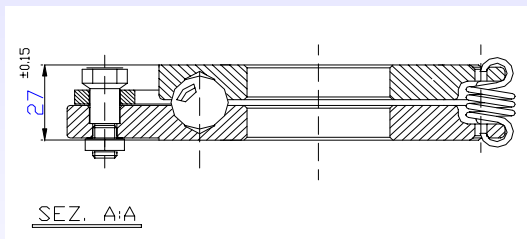
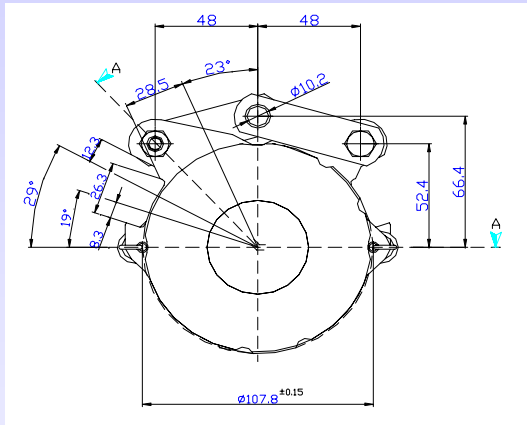




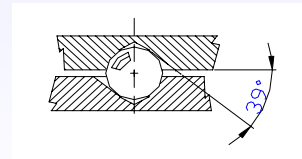
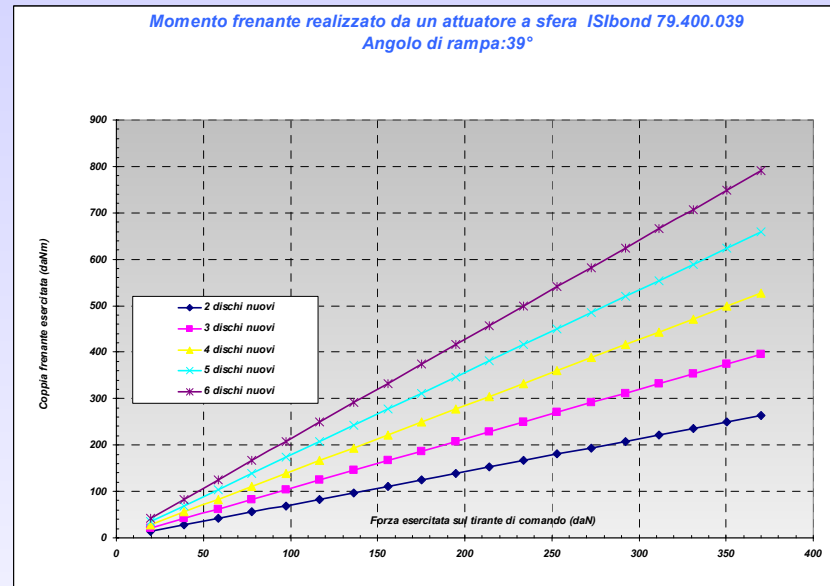
Attuatore 4''

Ingombri e uso:



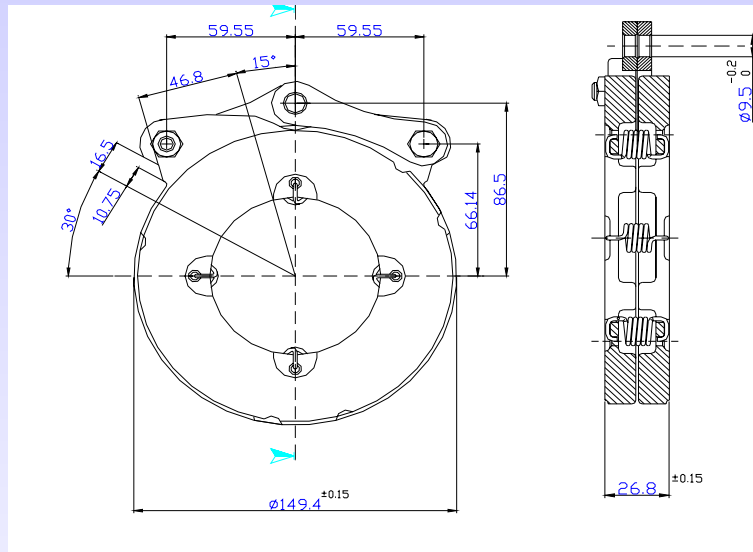
Funzionamento a secco.

Le caratteristiche di funzionamento si riferiscono alla configurazione priva di usura.





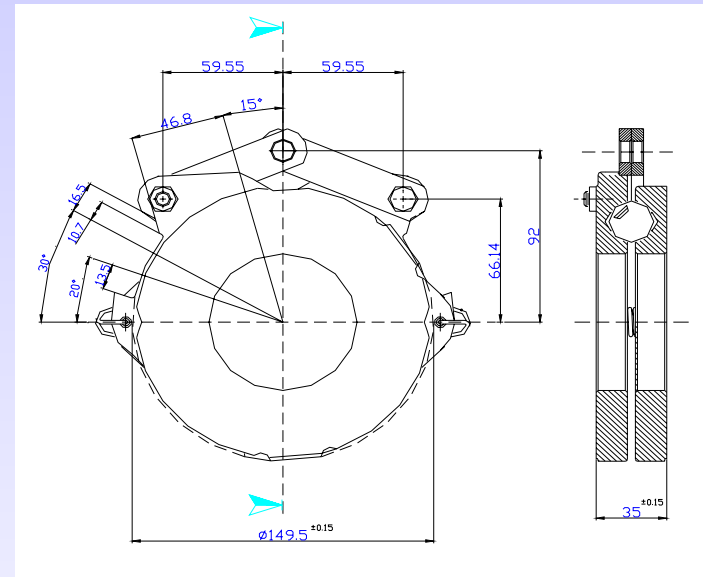
Attuatore 5,6''



Configurazione 79.560TOP

Angolo di rampa : 21° e 24°

Funzionamento a bagno d'olio.



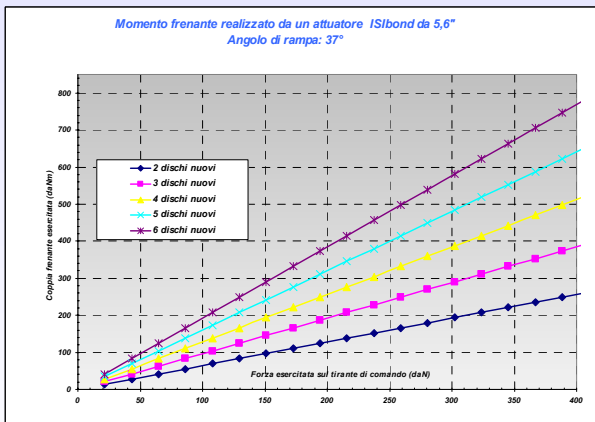
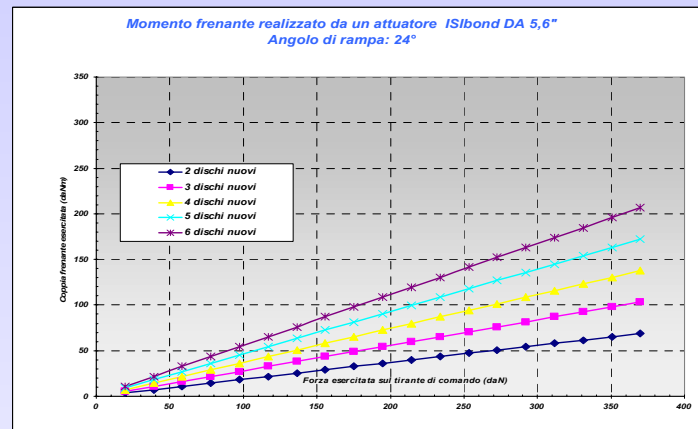
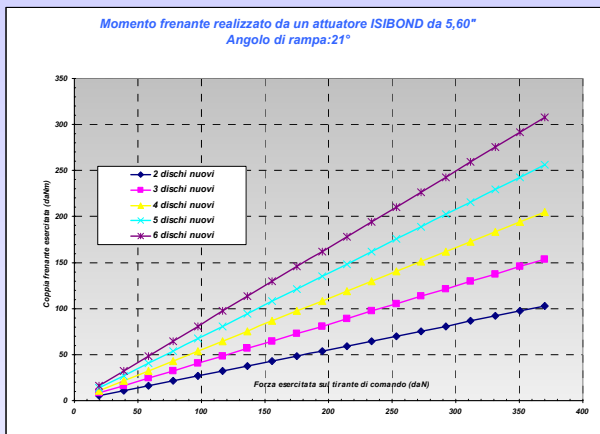
Configurazione 79.560.010

Angolo di rampa: 37°

Funzionamento a secco.



Caratteristiche 5,6''

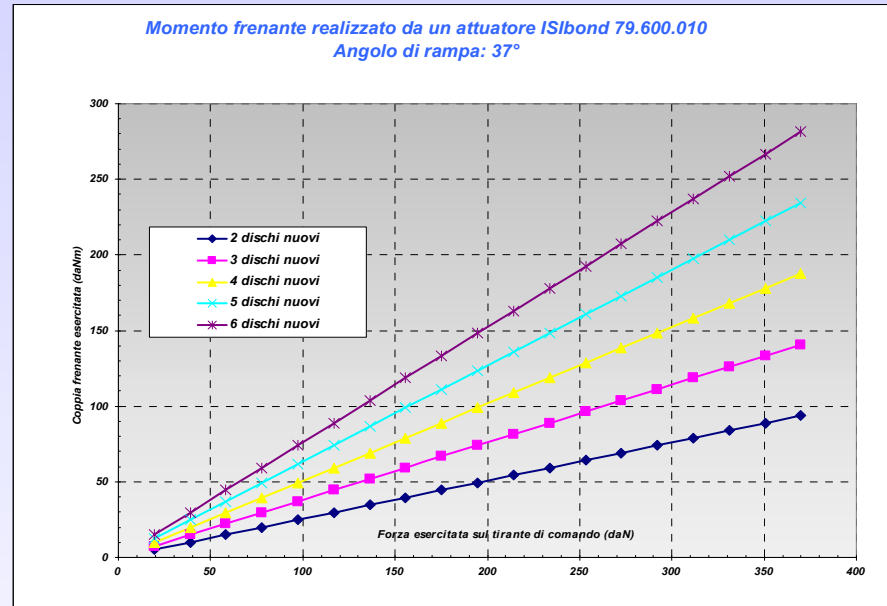
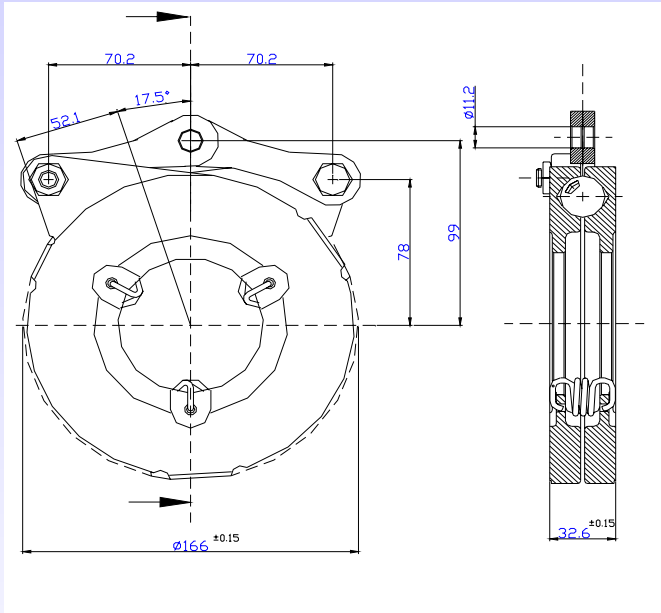


Le caratteristiche si riferiscono alla configurazione priva di usura.



Attuatore 6" 79.600.010

Ingombri e uso:



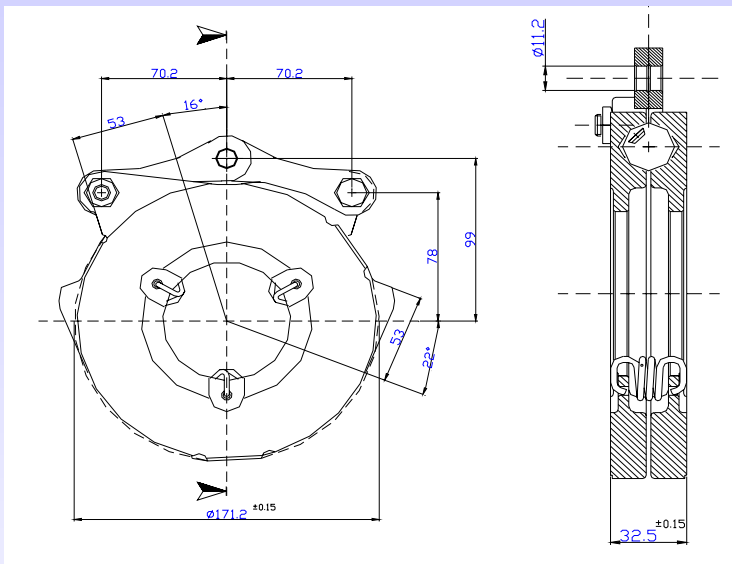
Angolo di rampa : 37°

Funzionamento a secco.

Le caratteristiche di funzionamento si riferiscono alla configurazione priva di usura.



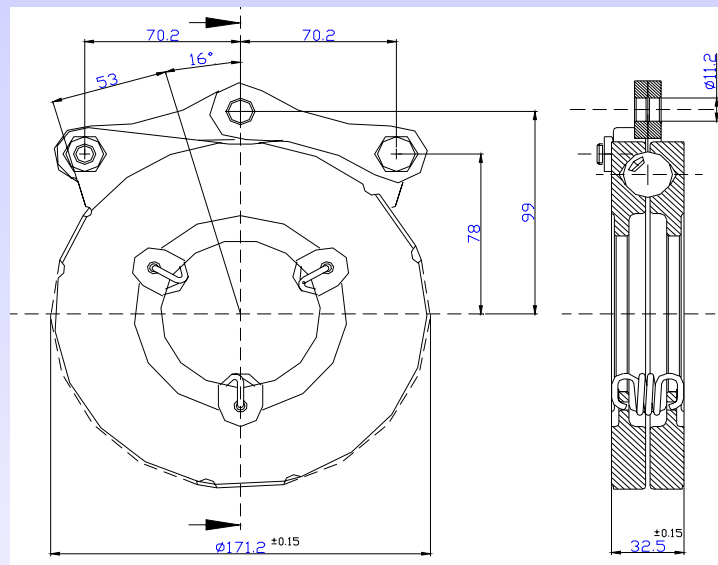
Attuatore 6,5''



Configurazione 79.650TOP:

Angolo di rampa: 21°, 25°, 37°

Funzionamento a bagno d'olio (21° e 25°)
e a secco (37°).



Configurazione 79.650.016

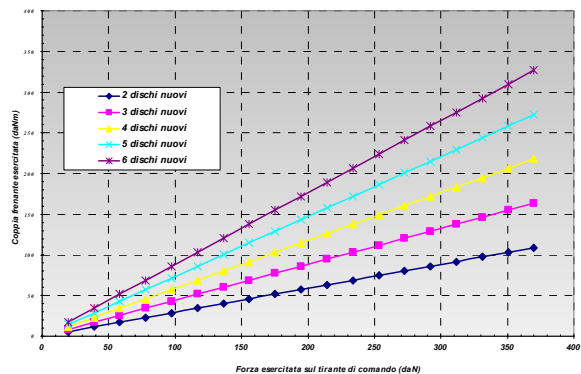
Angolo di rampa: 21°

Funzionamento a bagno d'olio.

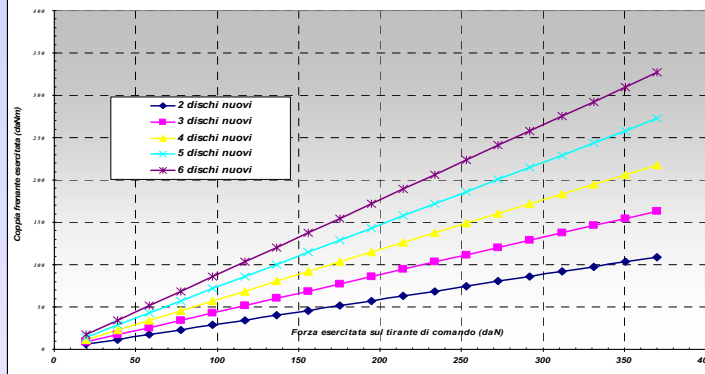


Caratteristiche 6,5"

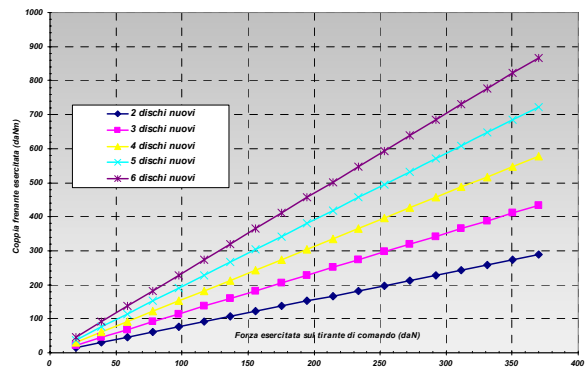
Momento frenante realizzato da un attuatore ISIBOND da 6,5"
Angolo di rampa: 21°



Momento frenante realizzato da un attuatore a sfera ISIBOND da 6,5"
Angolo di rampa: 25°



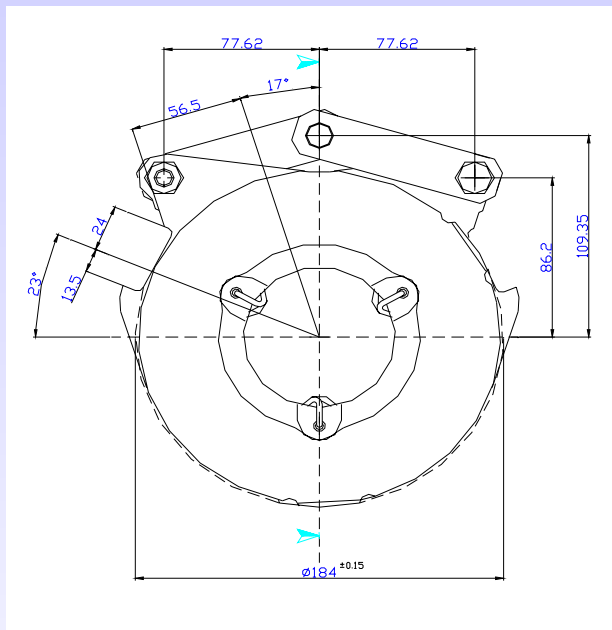
Momento frenante realizzato da un attuatore ISIBOND da 6,5"
Angolo della rampa: 37°



Le caratteristiche si riferiscono alla configurazione priva di usura.



Attuatore 7''

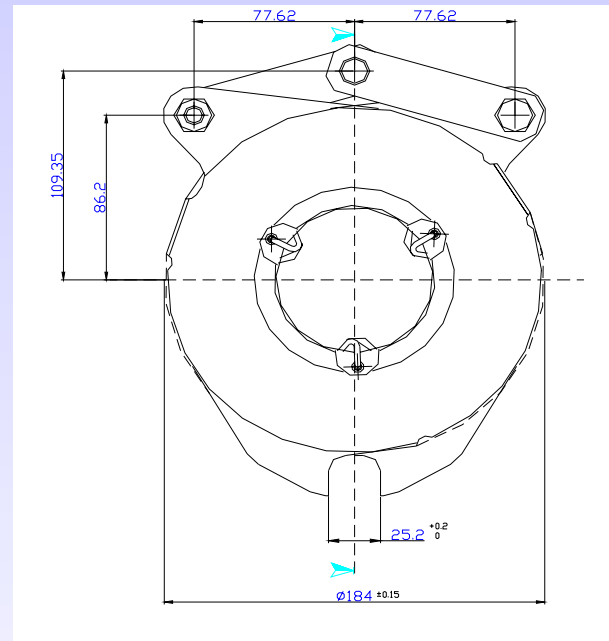
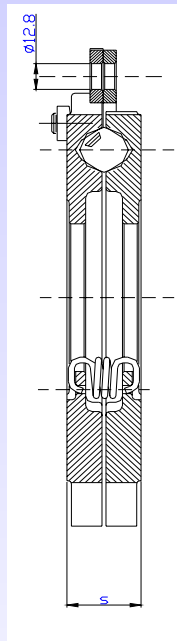


Configurazione 79.700TOP:

Angolo di rampa: 25° , 37°

Funzionamento a bagno d'olio (25°) e a secco (37°).

Spessore del pacco: $s = 34,8 \pm 0,15$



Configurazione 79.700.110

Angolo di rampa: 25°

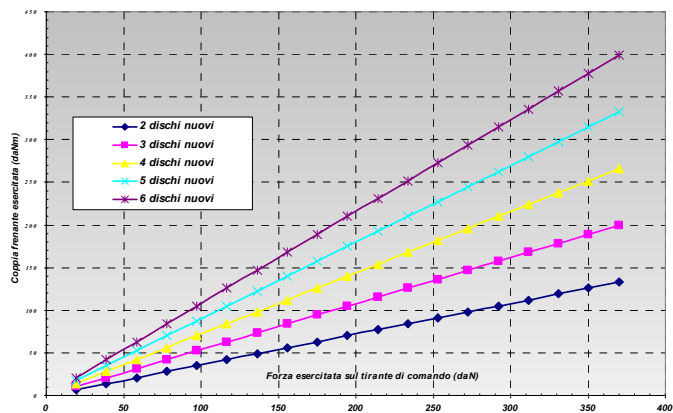
Funzionamento a bagno d'olio

Spessore del pacco: $s = 33,8 \pm 0,15$

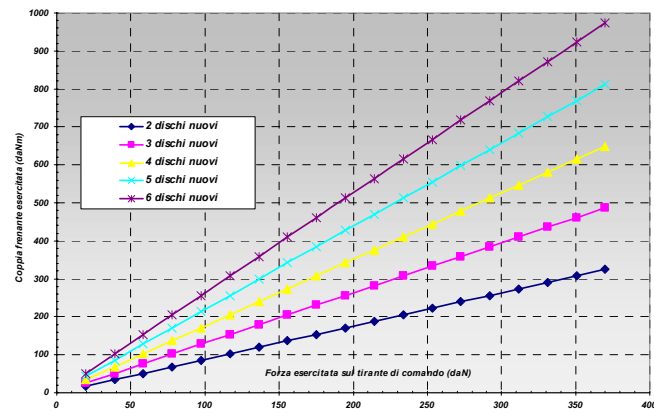


Caratteristiche 7"

Momento frenante realizzato da un attuatore ISIBOND da 7"
Angolo della rampa: 25°



Momento frenante realizzato da un attuatore ISIBOND da 7"
Angolo di rampa: 37°

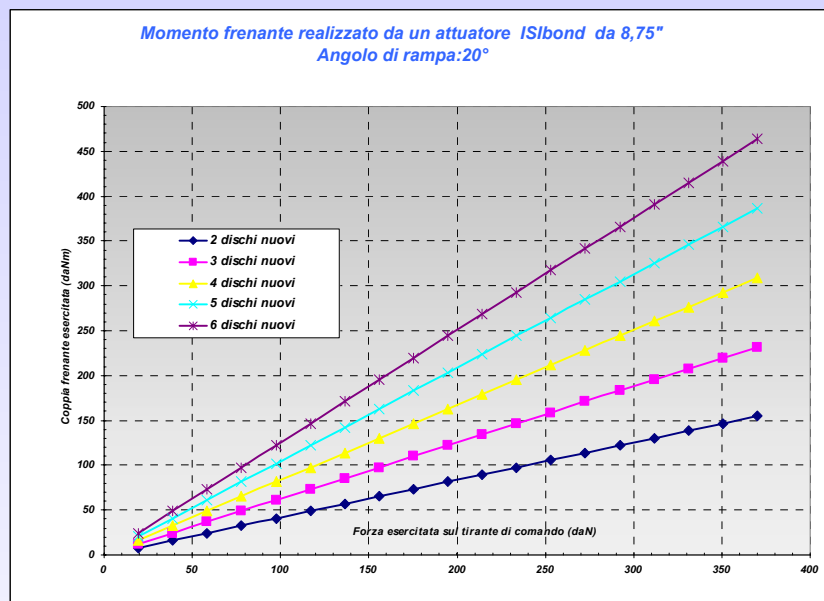
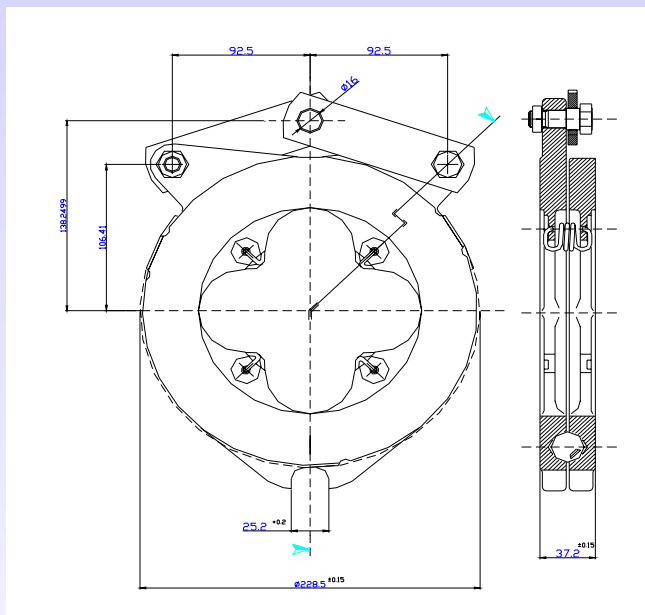


Le caratteristiche si riferiscono alla configurazione priva di usura.



Attuatore 8 " $\frac{3}{4}$ 79.875.010

Ingombri e uso:



Angolo di rampa: 20°

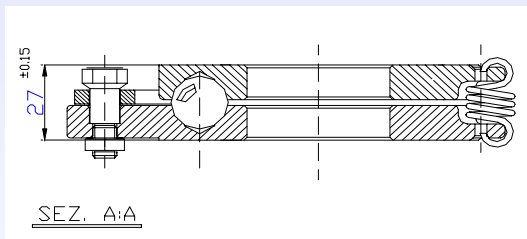
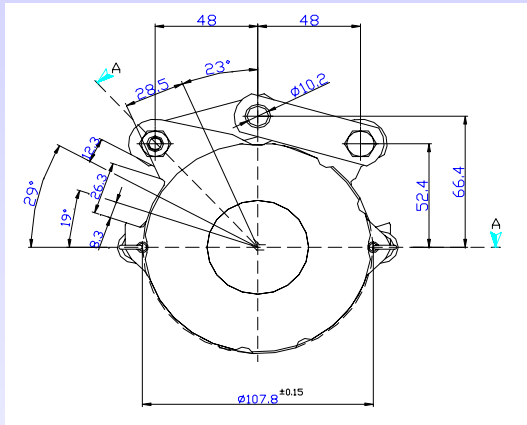
Funzionamento a bagno d'olio

Le caratteristiche di funzionamento si riferiscono alla configurazione priva di usura.



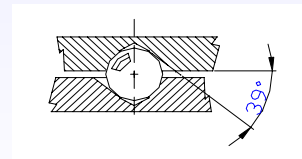
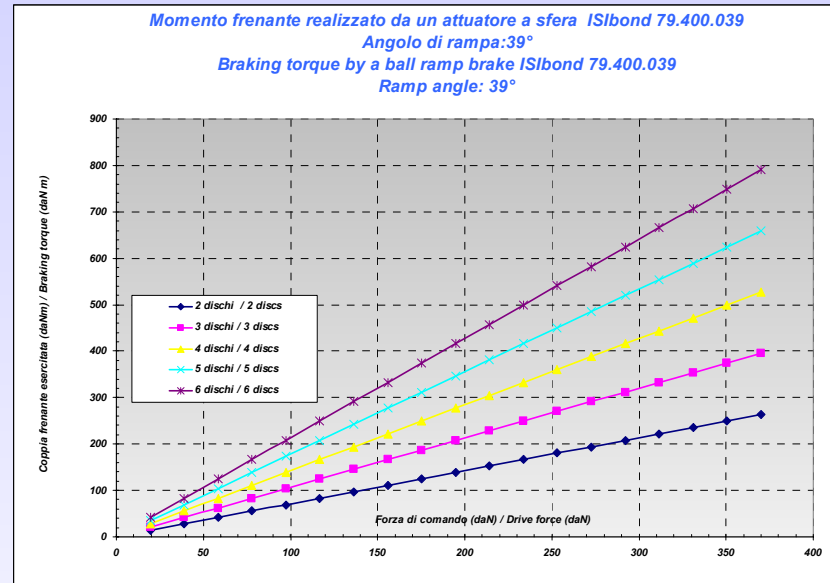
Ball Ramp Brake 4''

Overall dimensions and apply:



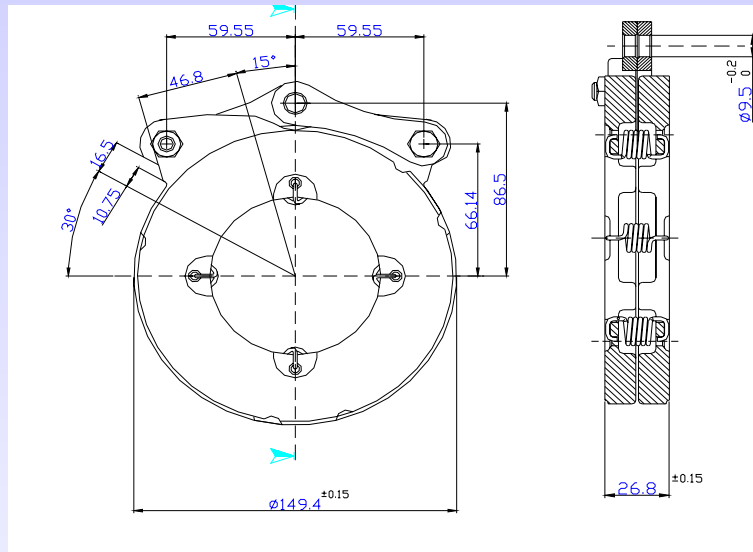
For dry applications.

The shown characteristic is referred to a new ball ramp brake (no wear condition).





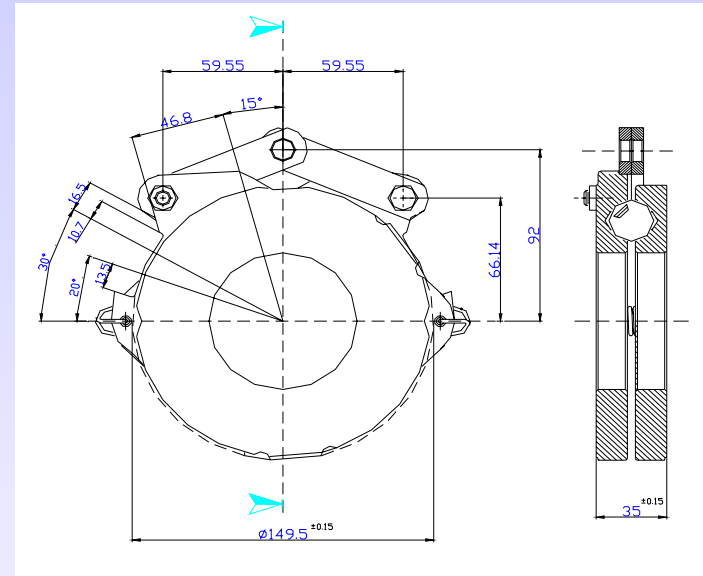
Ball Ramp Brake 5,6''



Model 79.560TOP

Ramp Angle: 21° e 24°

For wet applications.



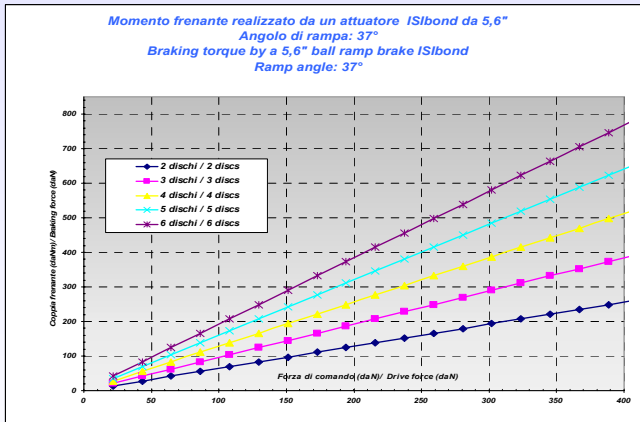
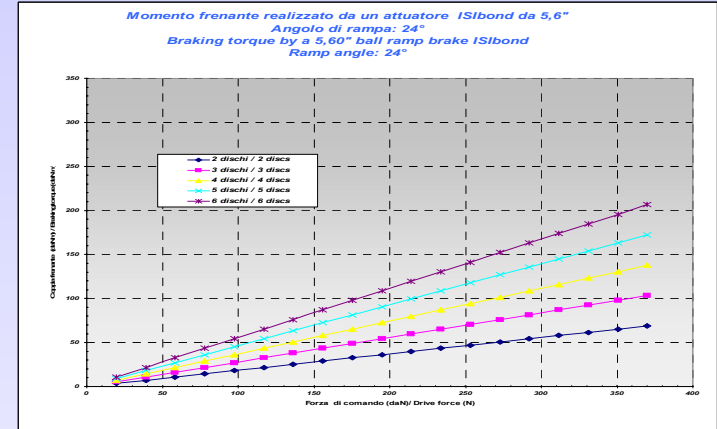
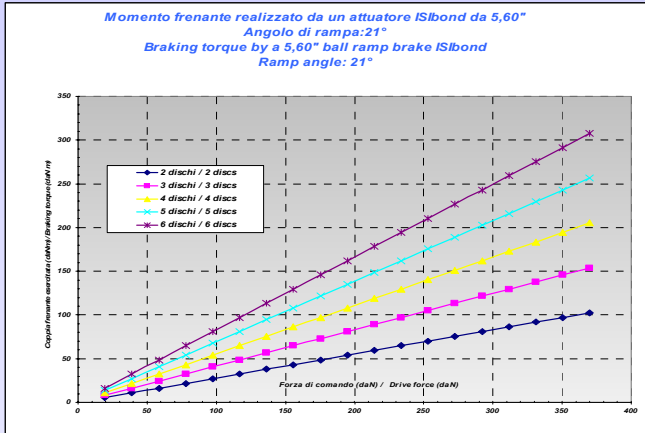
Model 79.560.010

Ramp Angle: 37°

For dry applications.



Characteristics 5,6''



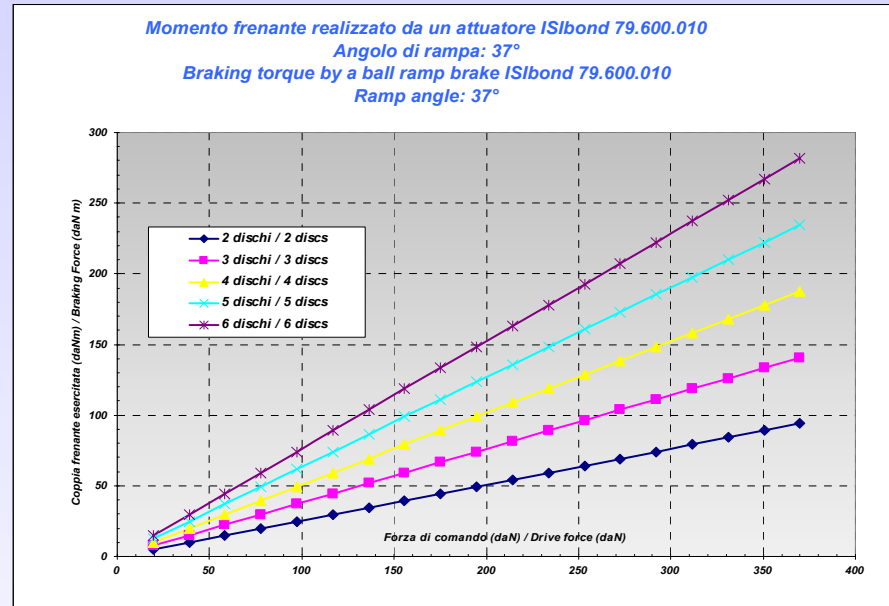
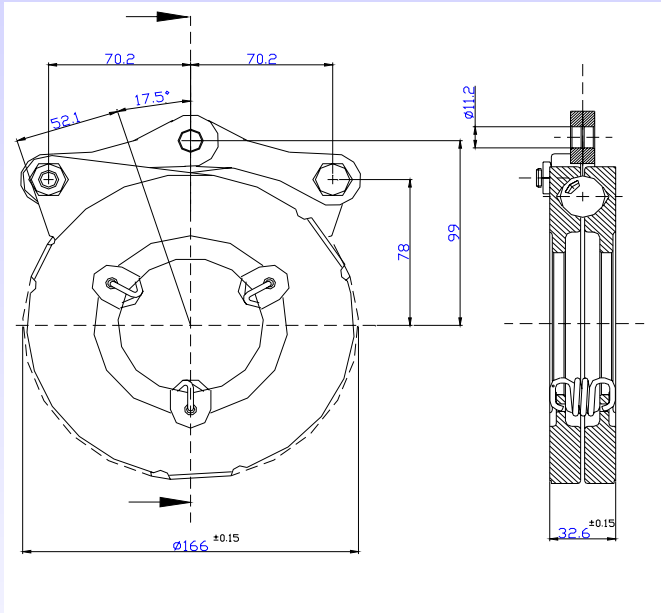
For wet (angle ramp 21°, 24°) and for dry applications (angle ramp 37°).

The shown characteristic is referred to a new ball ramp brake (no wear condition).



Ball Ramp Brake 6" 79.600.010

Overall dimensions and apply:



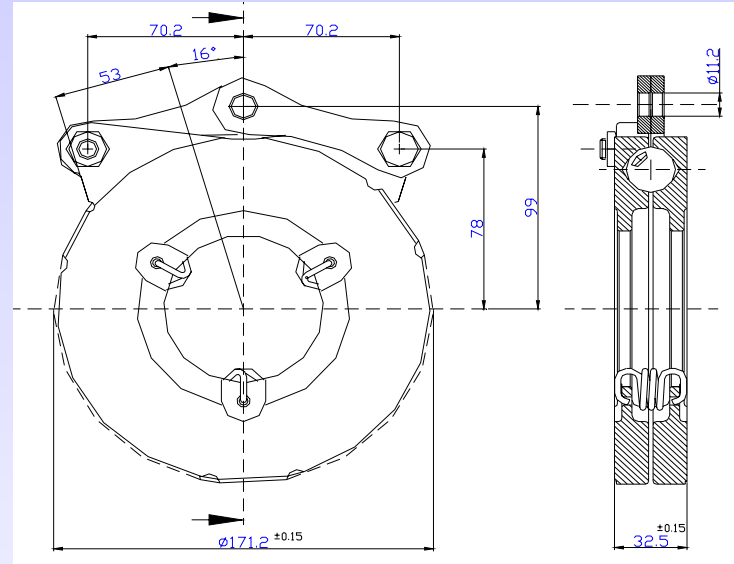
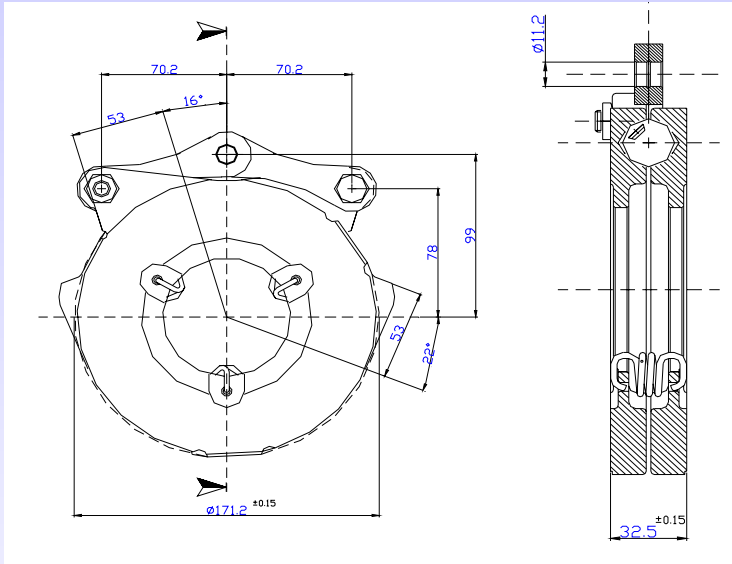
Ramp angle: 37°

For dry applications.

The shown characteristic is referred to a new ball ramp brake (no wear condition).



Ball Ramp Brake 6,5''



Model 79.650TOP:

Ramp angle: 21° , 25° , 37°

Oil immersed use (21° e 25°) and dry use (37°).

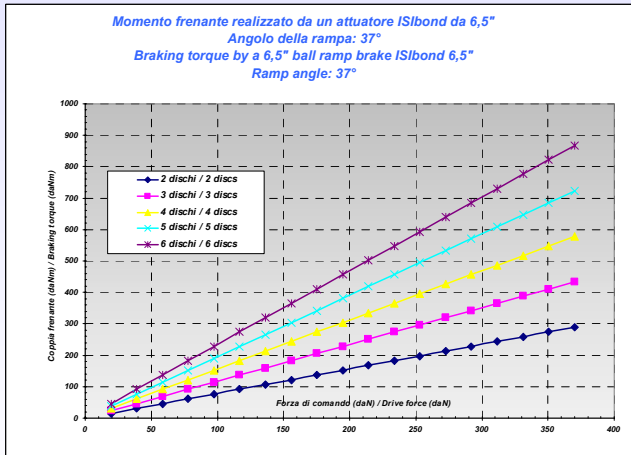
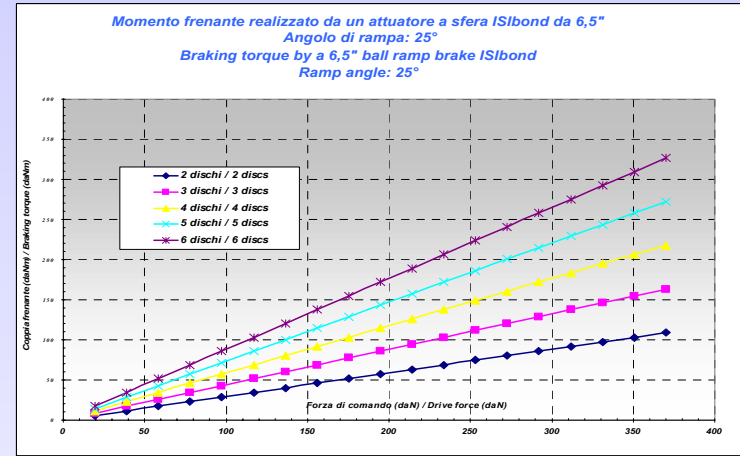
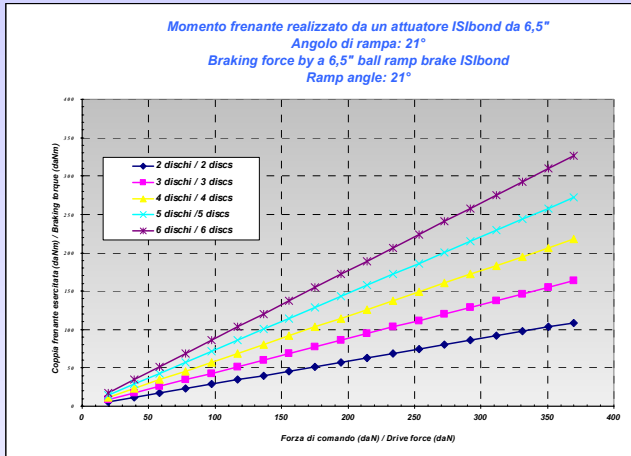
Model 79.650.016

Ramp angle: 21°

Oil immersed use.



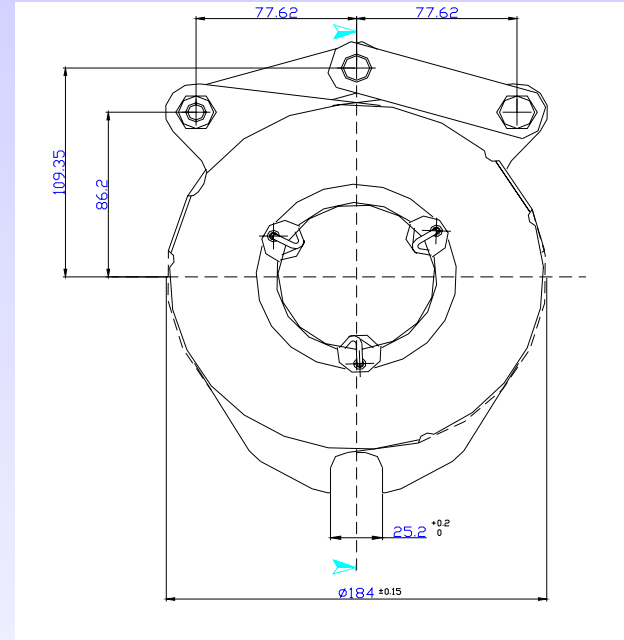
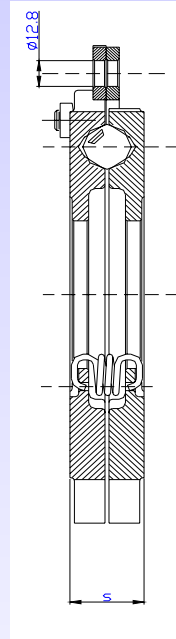
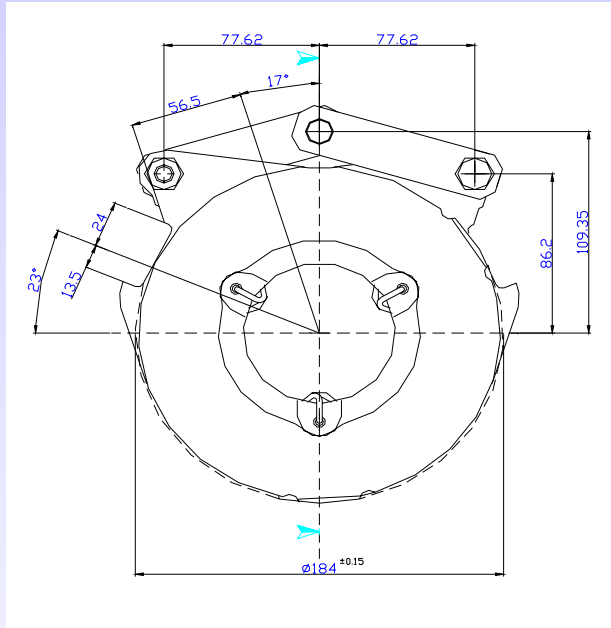
Characteristics 6,5"



The shown characteristic is referred to a new ball ramp brake (no wear condition).



Ball Ramp Brake 7"



Model 79.700TOP:

Ramp angle: 25°, 37°

For wet (25°) and dry (37°) applications.

Total width : $s=34,8 \pm 0,15$

Model 79.700.110

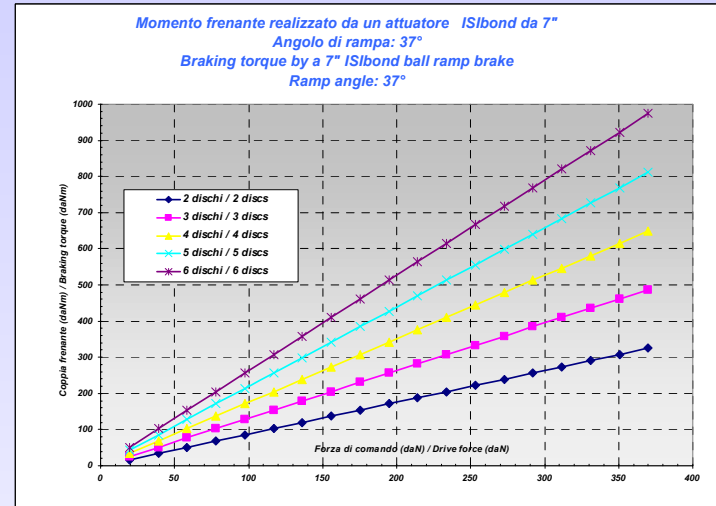
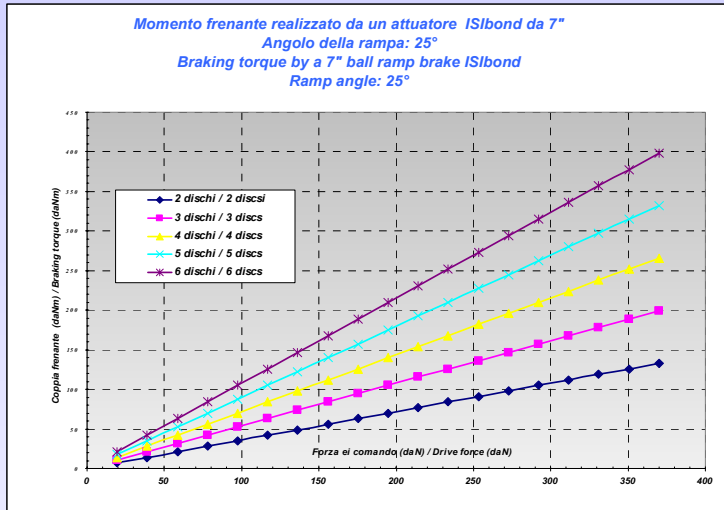
Ramp angle: 25°

For wet applications.

Total width: $s=33,8 \pm 0,15$



Characteristics 7"

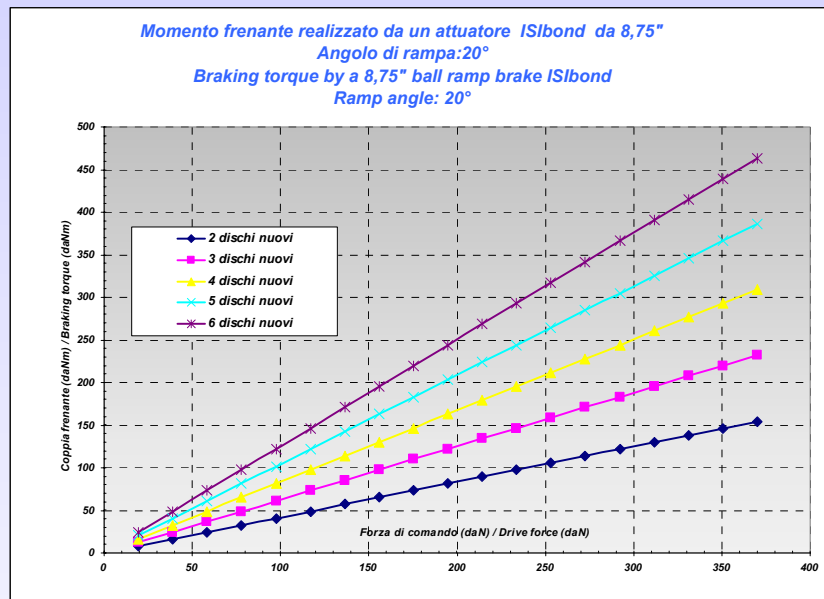
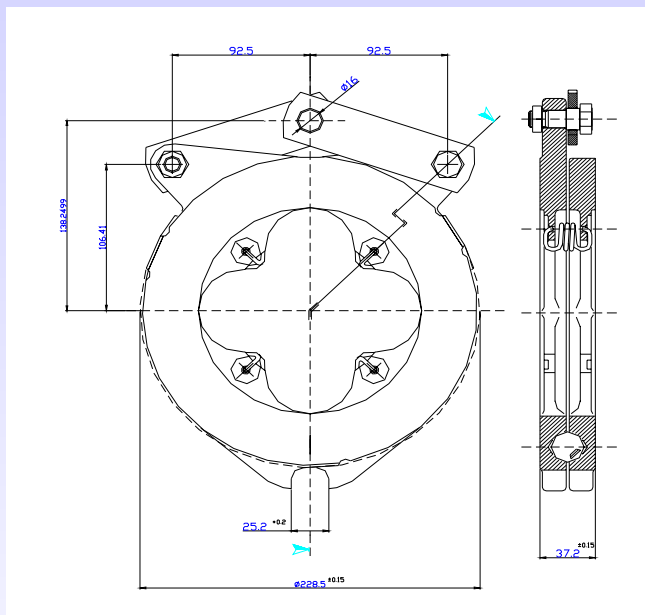


The shown characteristic is referred to a new ball ramp brake (no wear condition).



Ball Ramp Angle 8 " $\frac{3}{4}$ 79.875.010

Overall dimensions and apply:



Ramp angle: 20°

For wet applications

The shown characteristic is referred to a new ball ramp brake (no wear condition).